

ERASMUS KA2 PROJECT



«*ENGAGING STUDENTS IN LEARNING PROCESS THROUGH INOVATION*»

2017-ES01-KA219-0379634

CHORZÓW- POLAND

2nd TRANSNATIONAL PROJECT MEETING

C1 Blended mobility of school learners

14-18 March 2018

ERASMUS PARTNERS

ERASMUS PARTNERS

Tutte le modifiche sono state salvate in Drive

- Aggiungi livello + Condividi
- Anteprima
- Scuola sec.1* gr. "A. CRISCUOLO"
 - Stili individuali
 - Pagani
- CPI O Cruce
 - Stili individuali
 - Cerceda
- Colegiul National Unirea
 - Stili individuali
 - Turnu Măgurele
- URZAD MIASTA CHORZOW
 - Stili individuali
 - Chorzów
- Stokeinteignhead Primary School
 - Stili individuali
 - Stokeinteignhead
- Livello senza titolo
- Mappa base

The map displays various European countries with blue location pins. Green arrows point from the map to Italy, indicating a focus on that region.

WELLCOME AND GYMKANA In Chorzow



STUDENTS WELCOME GUESTS

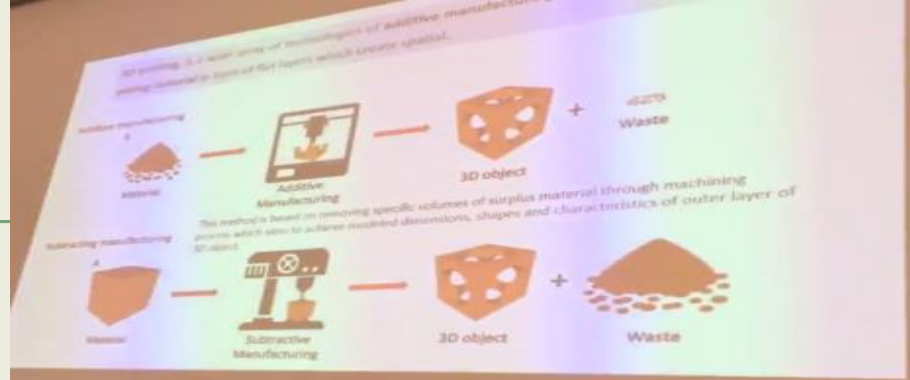


WITH A GYMKANA



WORKSHOPS &

**WORK
PRESENTATIONS**



**STUDENTS TEACH
OTHER
STUDENTS**

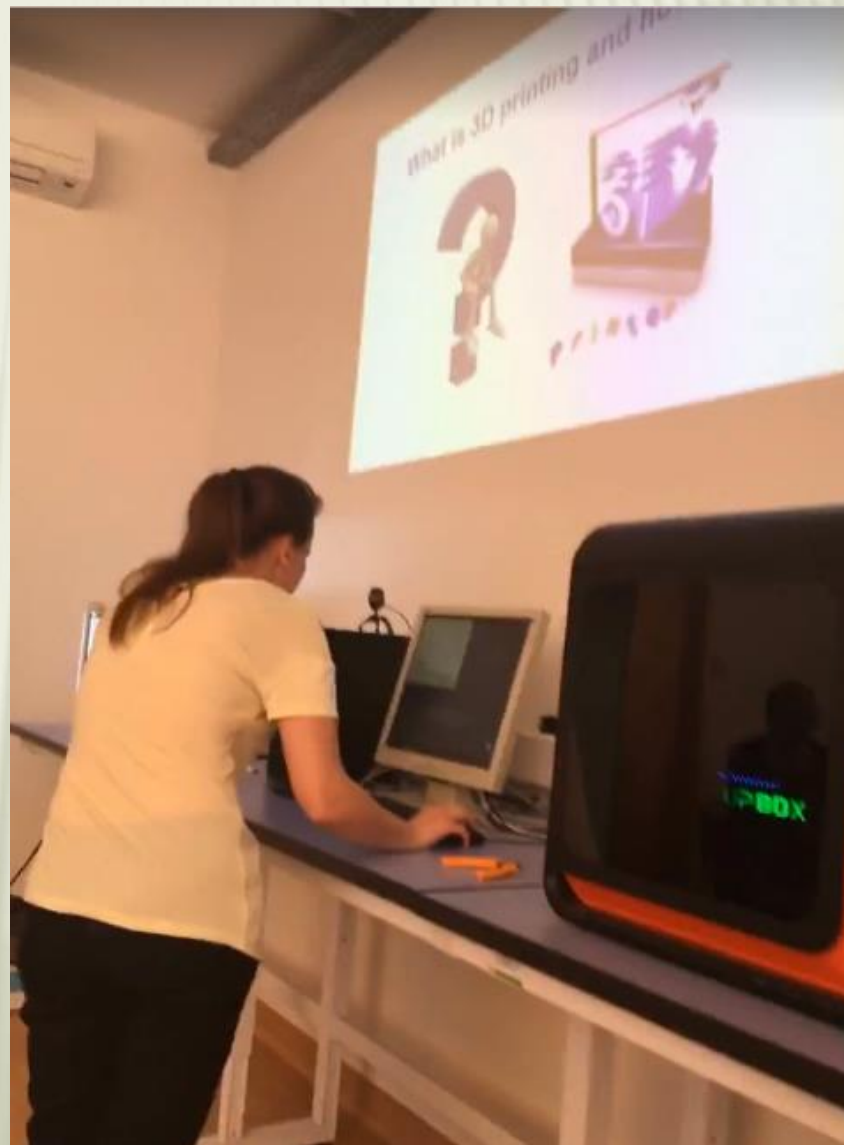
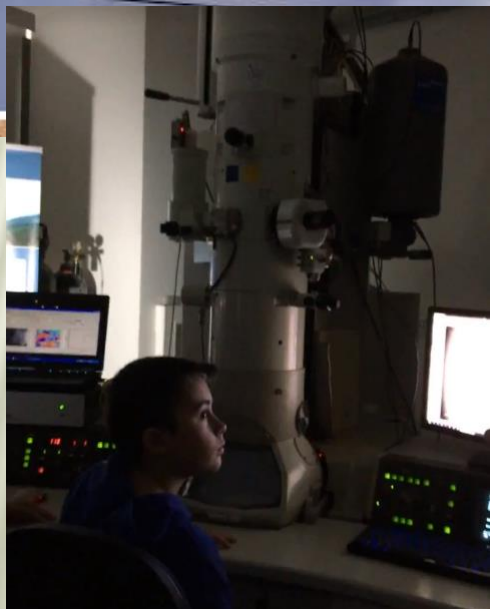
WORKSHOPS AT THE UNIVERSITY OF SILESIA



Chemistry

**electron
microscope**

3D printing



VISIT AND WORKSHOPS AT SILESIA PARK

- ✖ *The Silesian Park It is a complex in the center of the Metropolis of Upper Silesia on a border of Chorzów and Katowice in Silesia, Poland. The park area is 620 hectares. it's almost twice as big as Central Park in New York. Students explored phenology activities.*



AT THE PARK STUDENTS ALSO WORKED ON



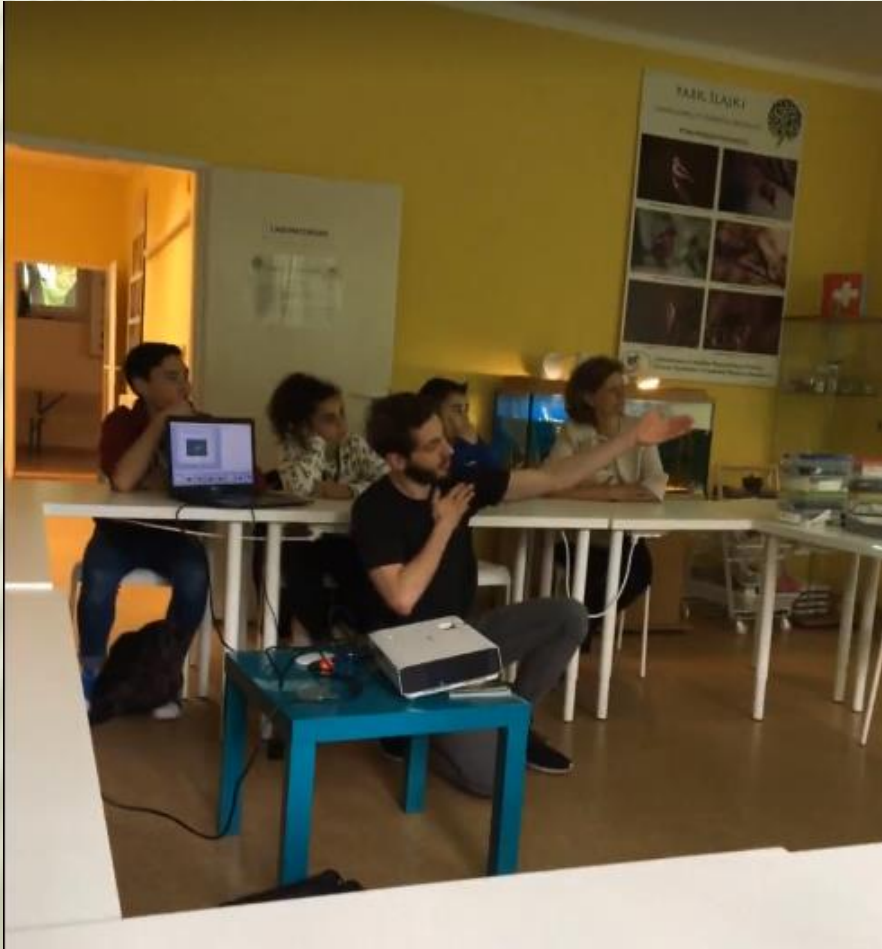
VISITING THE COAL MINE



VISITING KRAKOW



END OF THE MEETING &



***BLENDED
MOBILITY***